



Custom Fares

1. Introduction

Available on Viewpoint 3.0 and Galileo Desktop V1.01, the Custom Fares tool allows users to search for fares from low cost carriers via the web and the Galileo Host simultaneously. Once a fare is found the users have the ability to book the fare.

Please refer to the *Custom Fares User Guide* document for a more detailed functionality description.

1.1 Supported Platforms

Custom Fares Release 4.0 will run on the following supported platforms:

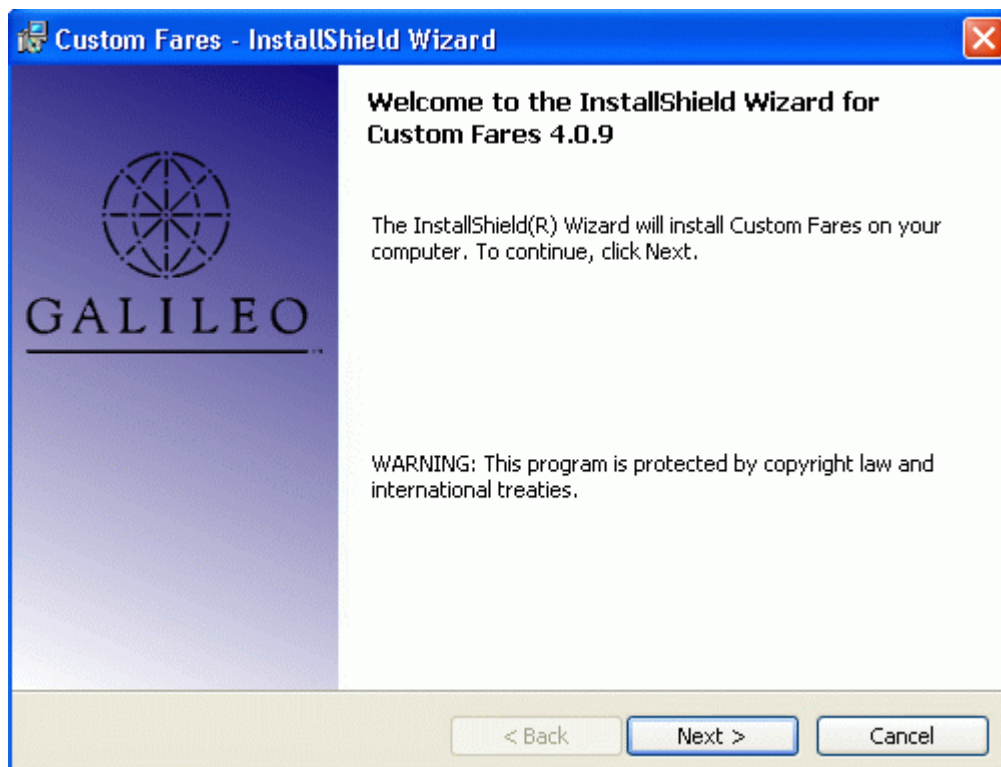
Win XP Pro

Win 2K Pro

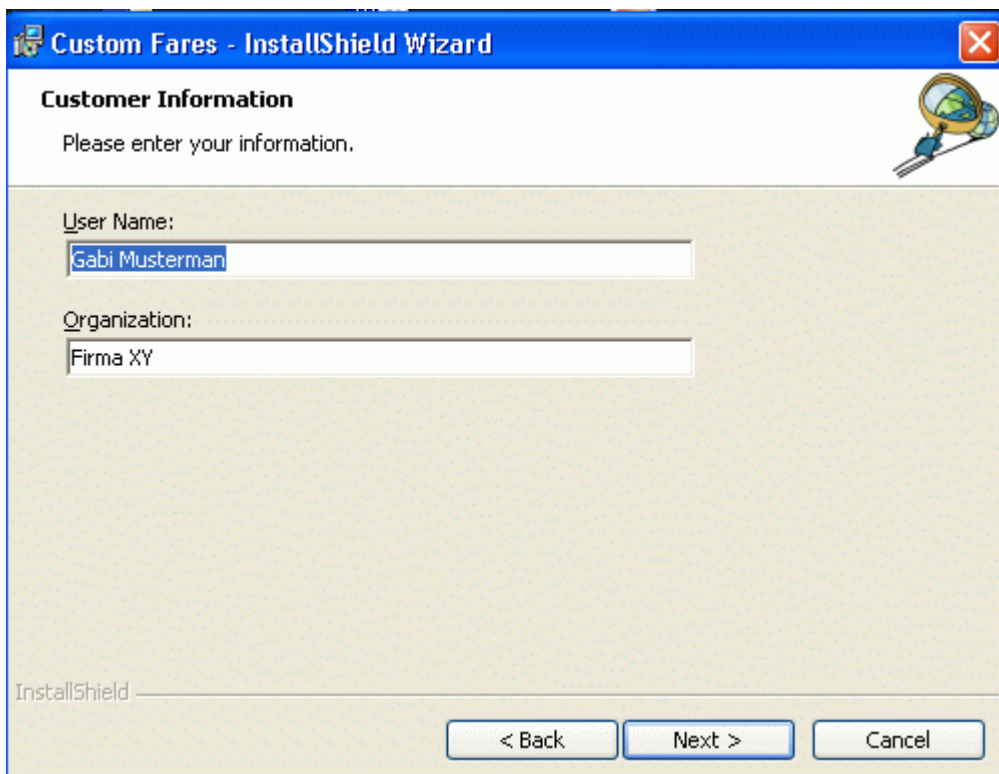
NT4 Sp6

2.0 Installation

1. Insert the **Custom Fares Installation CD** into the CD ROM drive of your workstation.
2. The **Custom Fares Installation** Welcome screen is displayed showing the version number being installed. Click on **[Next]**.



3. At the **Customer Information** screen enter the **User Name:** and the **Organisation:** or accept the defaults offered, select [**Anyone who uses this computer (all users)**] (Windows XP only) and then click on [**Next**].



Custom Fares - InstallShield Wizard

Customer Information

Please enter your information.

User Name:
Gabi Musterman

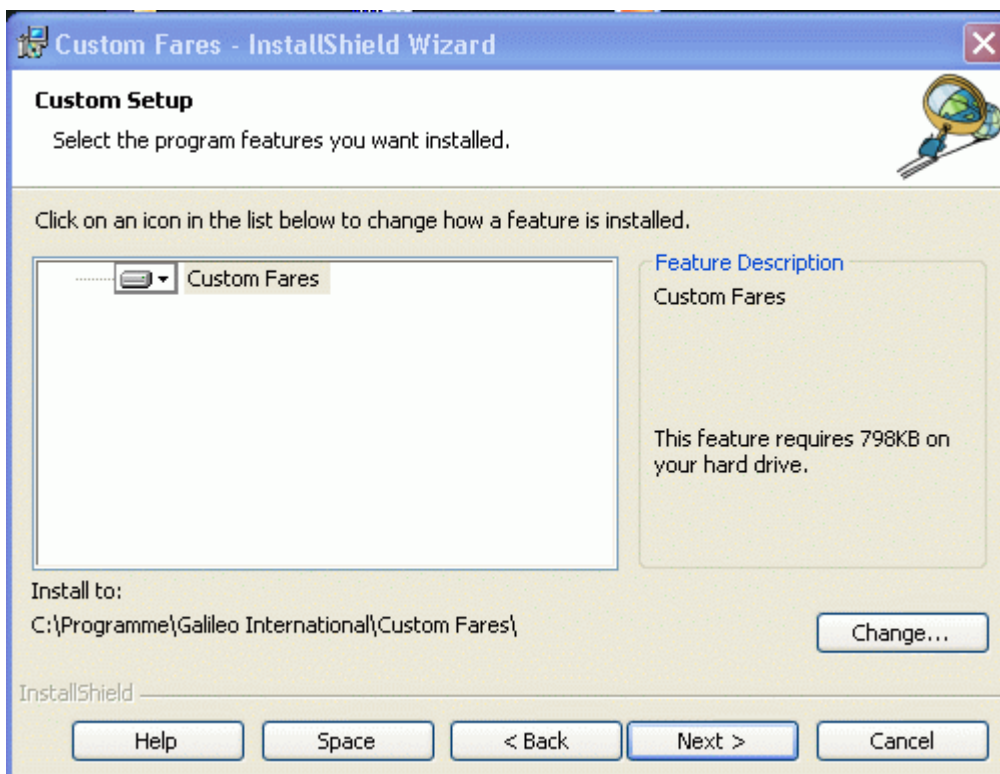
Organization:
Firma XY

InstallShield

< Back Next > Cancel

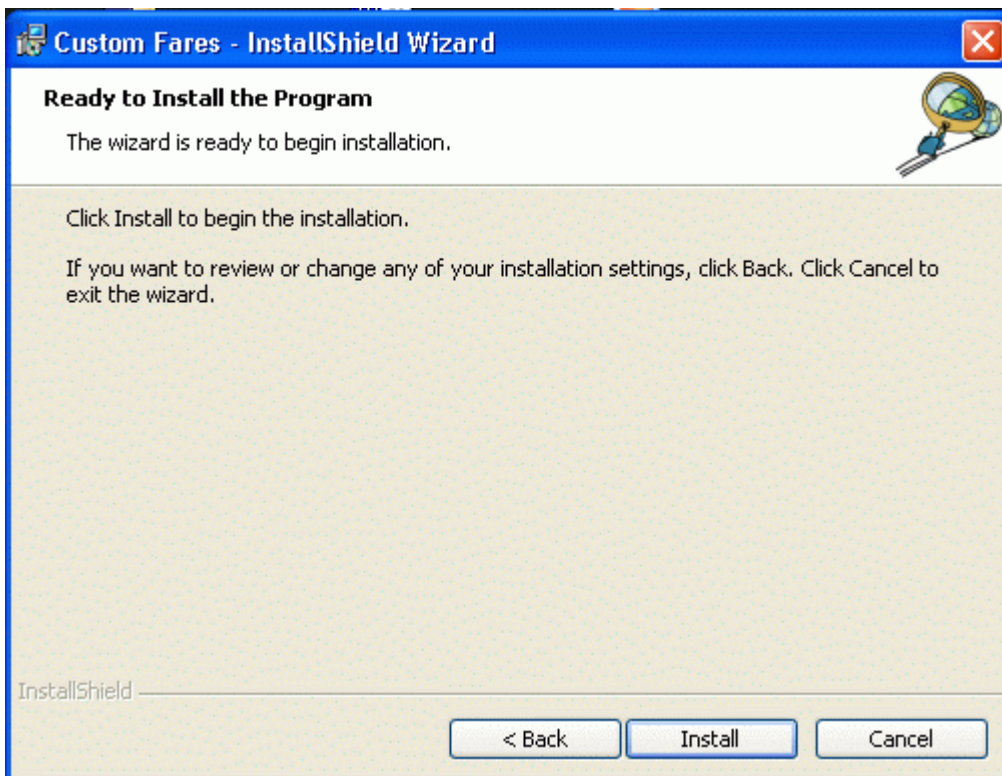


4. From the **Custom Setup** screen select [**Custom Fares**]. (At this point either select 'The feature will be installed...', or 'The feature, and all subfeatures, will be installed...' since these are the same options.) This screen displays the default directory that Custom Fares will be installed onto. If this directory is not correct, it may be changed at this point by selecting the **Change** button. If the chosen directory name does not exist it will be created. Then click on [**Next**].





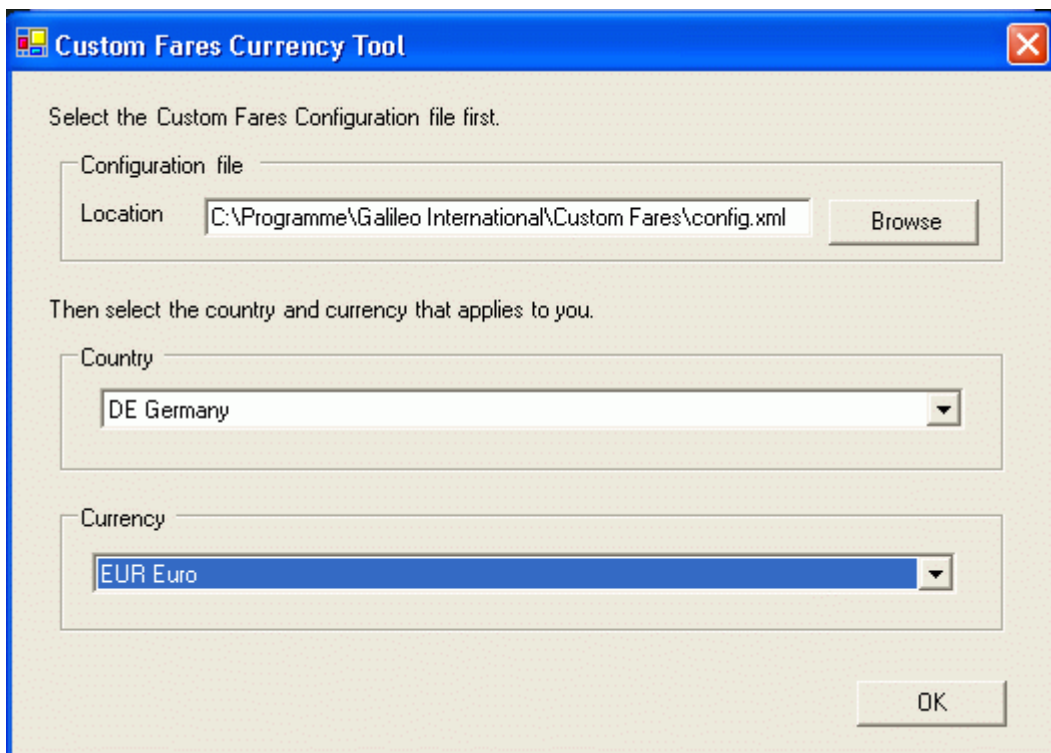
5. At this point, if the **Viewpoint** installation directory is not found, the installation will display an error. You will be advised to install Viewpoint prior to Custom Fares and the installation will terminate.
6. At the next screen, click on **[Install]** to begin the installation. Files are copied into the directory which may take a few minutes.



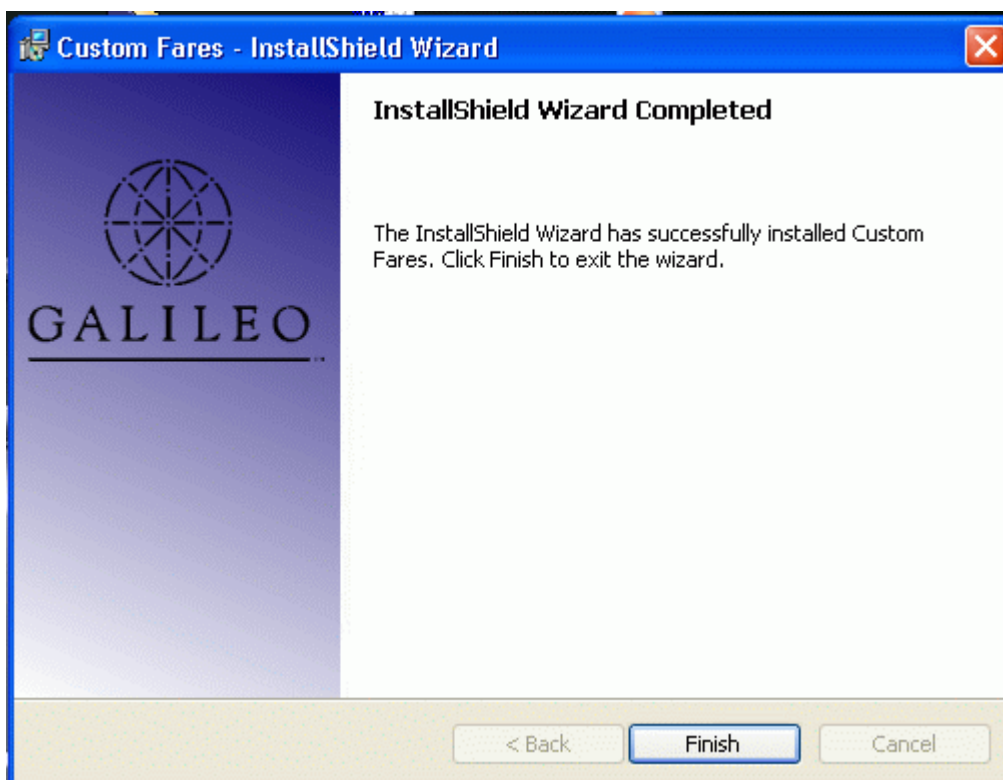
7. At the **Custom Fare Installation** warning prompt, select **[OK]** to complete the software install.



8. Custom Fares needs to know which country you are in and which currency is being used, a dialogue will prompt the user to select from a drop down of countries and currencies. The Configuration file location is displayed and if this is incorrect, it may be changed at this point. There is a Browse facility to locate the file. Once the desired country and currency is chosen, click [OK] to update the Configuration file.



9. This completes the installation. Click on [**Finish**] to exit the wizard.



2.1 Post Installation configuration - Proxy Server with authentication


If your network validates users' access to the Internet via a proxy server, you may need to run the Custom Fares Proxy Server tool to enable the Custom Fares application to have access to the Internet. This is needed for retrieval of Web Fares.

2.1.1 Procedure

Users who access the internet through a proxy server which authenticates Windows users will need to run the **CFProxyPatch.exe** application to set themselves up as users of the system.

There are no changes to the installation procedure for Custom Fares Release 4.0.



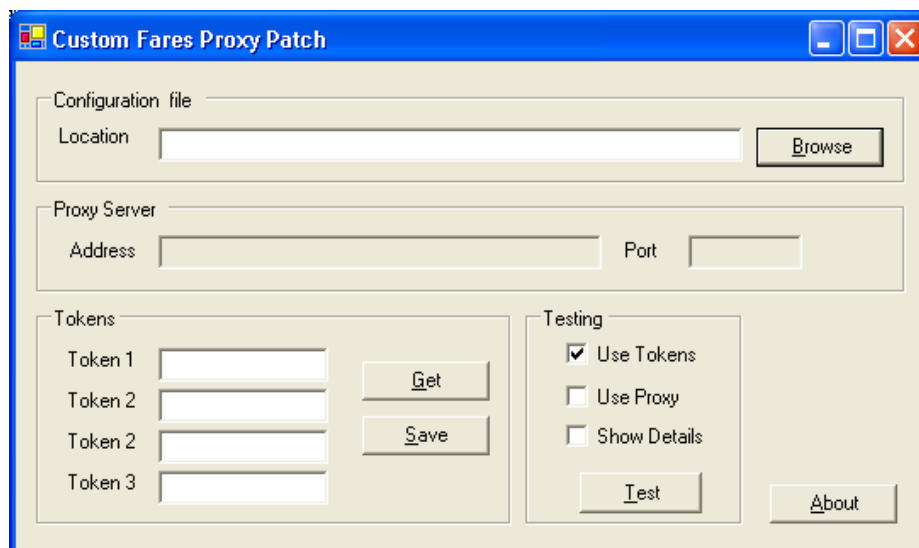


Once the application has been installed you will need to run the **CFProxyPatch.exe** application. This application is installed in the Custom Fares application installation directory. If you have taken all defaults when installing, the directory is: C:\Program Files\Galileo International\Custom Fares.

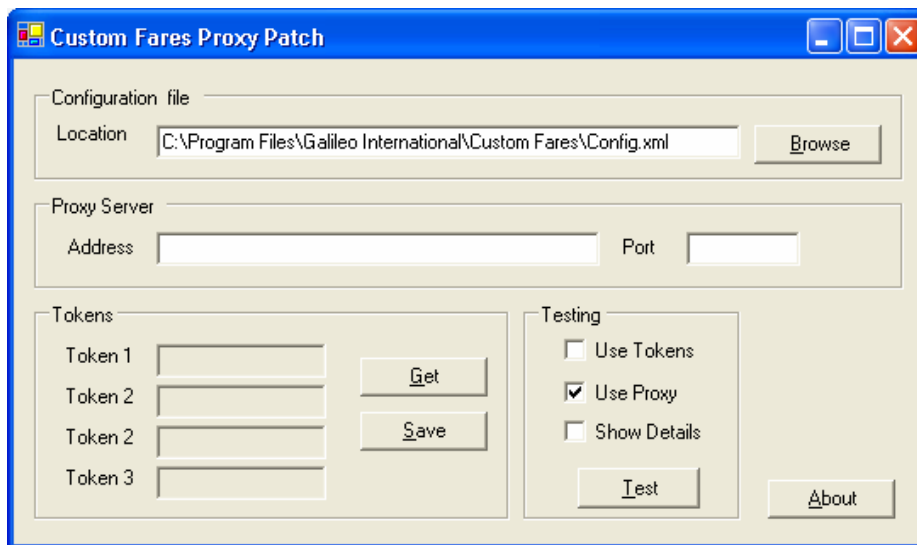
If you changed the default application installation directory you will find it in the directory of your choice. Use Search from the Start menu typing the name of the file (CFProxyPatch.exe) if you are having trouble finding the application.

2.2 Running the patch

1. Check that your internet connection is working properly by opening Internet Explorer and attempting to access a site you do not normally go to. If your internet connection is not working at the time, you can still run the path, but you will not be able to test it. You will not be able to access Web Fares in Custom Fares unless your internet connection is working properly.
2. Double click on the file **CFProxyPatch.exe**. The following screen will be displayed :-



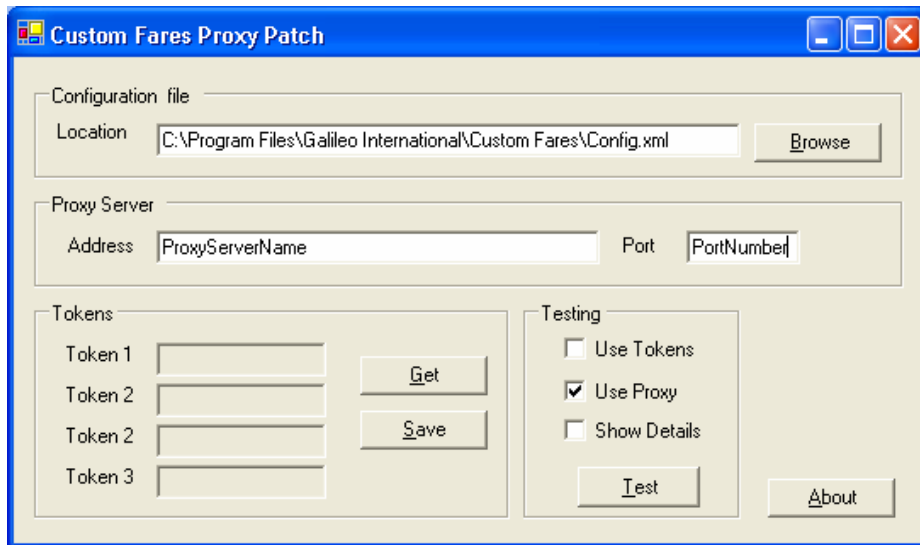
3. Set up the target configuration file by clicking on the **[Browse]** button and searching for the **config.xml** file. Also check **[Use Proxy]** in the **Testing** section and uncheck **[Use Tokens]**. When complete, select **[OK]** and the following screen should be displayed :-



The Custom Fares configuration file (config.xml) stores all configuration information for Custom Fares and can be found in the directory specified when Custom Fares was installed (normally **C:\Program Files\Galileo International\Custom Fares**).



4. Type the name of the Proxy Server in the **Address** field and the port number to be used in the **Port** field.



When complete, click on the **[Save]** button.

5. Click on the **[Test]** button and a dialog box should be displayed with the text "Test passed". This indicates that all is working properly. If you get any other message at this stage, contact your Galileo Support representative.

